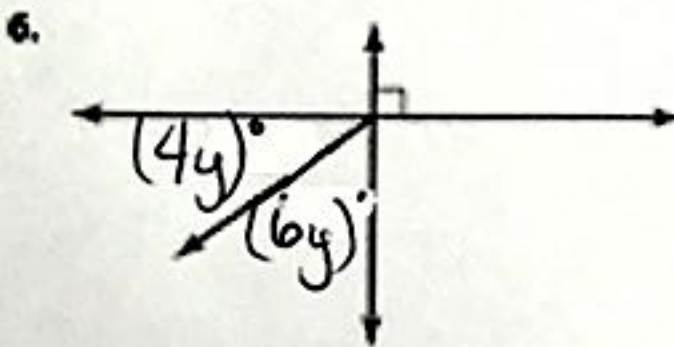
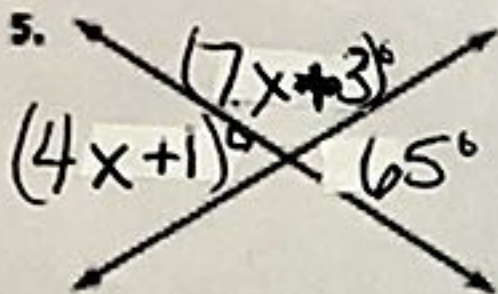
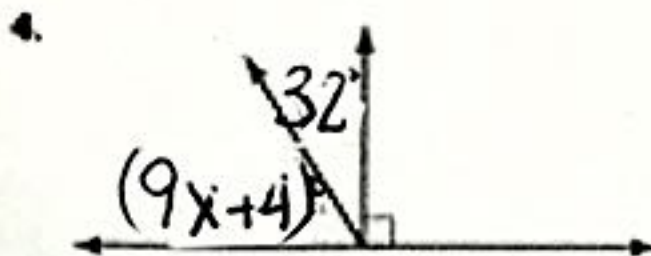
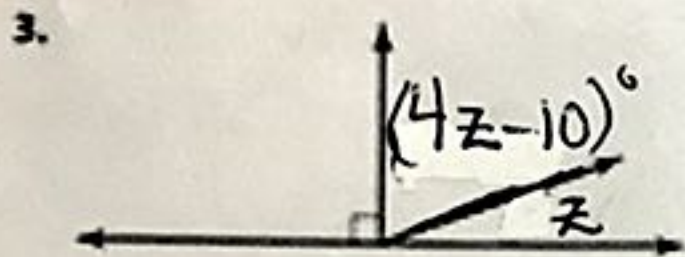
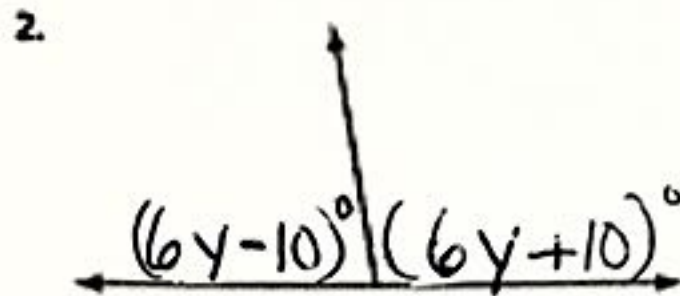
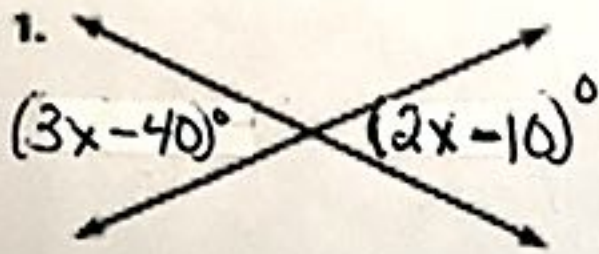


Practice 2-5

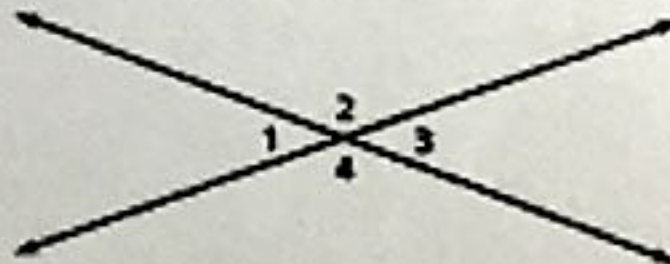
Proving Angles Congruent

Find the values of the variables.



Write true or false.

7. $\angle 1$ and $\angle 2$ are vertical angles.
8. $\angle 2$ and $\angle 3$ are supplementary angles.
9. $m\angle 1 = m\angle 3$
10. $m\angle 3 + m\angle 4 = 180$
11. $m\angle 1 + m\angle 3 = 180$
12. $\angle 4$ and $\angle 2$ are adjacent angles.



Write three conclusions that can be drawn from each figure.

